



REGAL REALTY
CAYMAN

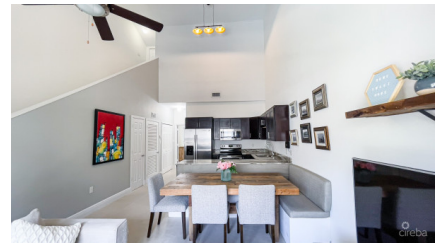
Queens Court, Seven Mile Beach, Grand Cayman, Cayman Islands
+1 (345) 916-7080
info@regalrealtycayman.com
www.regalrealtycayman

EMERALD ISLE CONDO SOUTH SOUND

South Sound, South Sound, Cayman Islands

MLS# 417409

CI\$499,000





Michael Day
michael@regalrealty.ky

Step into the comfort and convenience of this Emerald Isle Condo in South Sound. With a recent makeover and thoughtful touches, this property is poised to redefine your idea of home. Modern Comfort, Affordable Luxury Enjoy the charm of modern living without breaking the bank. From the newly renovated interiors to the practical additions like a custom dining bench with storage, every detail is designed to enhance your everyday life. And with 20 ft vaulted ceilings, you'll feel like you're living in a spacious oasis. Practicality Meets Style Say hello to practicality without sacrificing style. This 2-bedroom, 2-bathroom condo boasts comfortable living spaces furnished with West Elm and Sticks & Stones pieces, ensuring both comfort and aesthetic appeal. With 1059 sq ft of living space, there's room for the whole family. Move-In Ready Convenience Skip the hassle of renovations and move straight into your new home. This turnkey property comes fully furnished, so you can start making memories from day one. Plus, being pet-friendly means your furry friends are welcome too. Live, Work, Play in South Sound Enjoy the best of both worlds at Emerald Isle. Location is key, and Emerald Isle is perfectly situated near George Town, schools, restaurants, pickleball/tennis courts, and the exciting new Enterprise City. Enjoy the convenience of everything you need right at your doorstep. Investment Potential at Your Doorstep Looking to invest? Look no further. Whether you're a first-time buyer or a seasoned investor, this property offers great value and rental potential. Join a community that's perfect for homeowners and investors alike. The strata is professionally managed and is a low monthly fee. Your Path to South Sound Living Ready to call this Emerald Isle Condo South Sound home? Reach out today and make Emerald Isle your own. With its blend of affordability, convenience, and charm, there's no better place to start your next chapter. How do you want to live your life? Agent Owned

Essential Information

Type	Status	MLS	Listing Type
Residential (For Sale)	Pen/Con	417409	Condominium

Key Details

Bed	Bath	Block & Parcel	Year Built	Old Price
2	2	15C,361H7H5	2015	0.00
Sqft				
1059				

Additional Fields

Block
15C

Parcel
361H7H5

Views
**Garden View, Pool
View**

Floor Level
2

Property Features

Pool
Yes

Furnished
Yes