

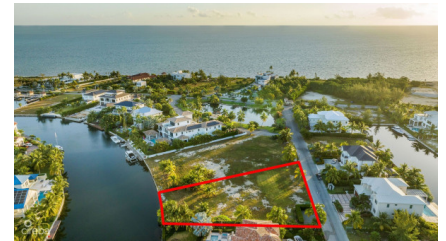
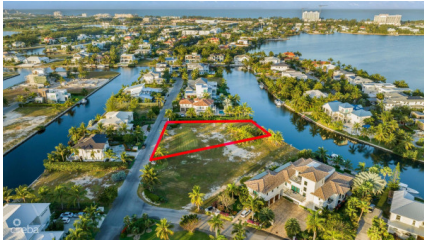
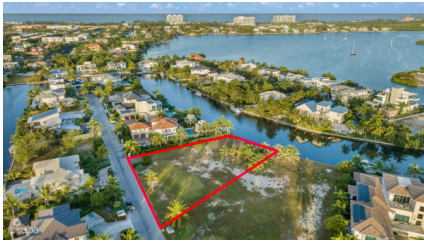


GREAT LALIQUE QUAY LAND - 0.62 ACRES

Seven Mile Beach, Seven Mile Beach, Cayman Islands

MLS# 417424

US\$2,900,000



Michael Day
michael@regalrealty.ky

Introducing one of the remaining parcels nestled within the esteemed LaliQue Quay of Crystal Harbour. Spanning an impressive 0.62 acres, this rare opportunity offers the perfect canvas for crafting your dream home amidst one of the most exclusive waterfront communities in the Cayman Islands. Imagine waking up to serene waterfront views, with your private dock ready to host your yacht or boat. The property comes equipped with a retaining wall, making the process of building your dock a seamless reality. Located on the iconic Seven Mile Beach Corridor, you'll be within easy reach of world-class beaches, premier golf courses, gourmet dining, and vibrant entertainment. Whether you're envisioning a contemporary masterpiece or a timeless retreat infused with Caribbean charm, this oversized lot provides the ideal setting for an unparalleled lifestyle. This is more than a parcel of land – it's your invitation to build a life of luxury, privacy, and elegance in one of the most sought-after communities in the Cayman Islands. Don't miss out on this extraordinary opportunity to turn your vision into reality.

Essential Information

| | | | |
|--------------------------------|--------------------------|----------------------|--|
| Type Land (For Sale) | Status Current | MLS 417424 | Listing Type Low density residential |
|--------------------------------|--------------------------|----------------------|--|

Key Details

| | | | |
|--------------------------|---------------------|----------------------------------|--------------------------|
| Width 175.90 | Depth 234 | Block & Parcel 17A,276 | Old Price 0.00 |
| Acreage 0.6201 | | | |

Additional Fields

| | | | |
|---------------------------|-------------------------------|-----------------------------|--|
| Block 17A | Parcel 276 | Views Canal Front | Zoning Low Density residential |
| Sea Frontage 96 | Road Frontage 175.9 | Soil Other | |