



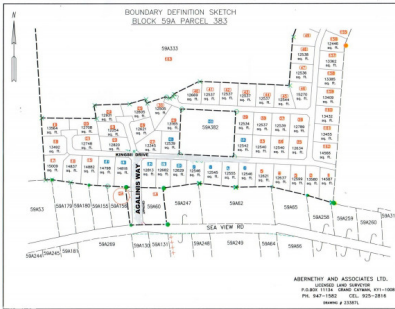
**REGAL REALTY**  
CAYMAN

Queens Court, Seven Mile Beach, Grand Cayman, Cayman Islands  
+1 (345) 916-7080  
info@regalrealtycayman.com  
www.regalrealtycayman

## AGALINIS ESTATE

Midland East  
MLS# 417726

**CI\$179,382**





**Osbert Francis**  
bert@regalrealty.ky

Agalinis Estate is one of the newest subdivision located on Seaview Road, Half a Mile East of Frank Sound Junction, East End that has parcels of land for sale over a phased development with 164 lots over 101 acres, 23 acres have been taken out to protect the Agalinis reserve where you find this endemic plant in and around this community, the newly built Briar Rose Castle can be used as a landmark. East End remains a beautiful and historical part of the Island a reflection of natural Cayman with parrots and more nature, unspoiled and deserted beaches, quiet roads and friendly people. Grand Cayman’s easternmost tip is known for its authenticity “cayman kind”. This secluded gated community has beaches close by, a boat launching pad, not far from Clifton Hunter High School, 2 miles from Health City Hospital, certainly a getaway from the bustle of Cayman a place where you can literally catch a breath of fresh air and call home. The lots are Demucked and fill to 4 ft. Above Mean Sea Level with underground electricity and utilities. Perfect for Single family homes, work in progress to allow for Multi family homes on selected lots. Get your piece of native Cayman Islands.

## Essential Information

Type <b>Land (For Sale)</b>	Status <b>Current</b>	MLS <b>417726</b>	Listing Type <b>Agriculture</b>
--------------------------------	--------------------------	----------------------	------------------------------------

## Key Details

Width <b>110</b>	Depth <b>160</b>	Block & Parcel <b>59A,383LOT12</b>	Old Price <b>0.00</b>
---------------------	---------------------	---------------------------------------	--------------------------

Acreage  
**0.2945**

## Additional Fields

Block <b>59A</b>	Parcel <b>383LOT12</b>	Views <b>Inland</b>
---------------------	---------------------------	------------------------