



REGAL REALTY
CAYMAN

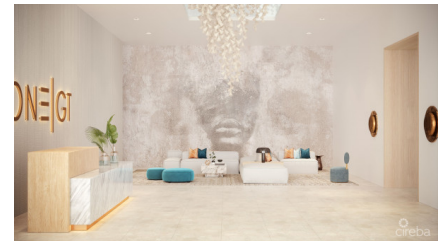
Queens Court, Seven Mile Beach, Grand Cayman, Cayman Islands
+1 (345) 916-7080
info@regalrealtycayman.com
www.regalrealtycayman

ONE GT 706, GEORGE TOWN CONDO

George Town Central, George Town, Cayman Islands

MLS# 419235

CI\$789,000





Osbert Francis
bert@regalrealty.ky

Introducing Unit 706 at ONE GT, a premier seventh-floor residence in Grand Cayman's forthcoming landmark development. Designed for flexibility, the residence features an articulated wall that allows the bedroom to shift from a private retreat to an open space with uninterrupted ocean views. This home features a contemporary full kitchen, breakfast bar, comfortable lounge area, and a spacious patio, embodying modern island living. ONE GT blends Caribbean design with global influences, drawing from rooftop beach clubs in Miami and LA, and the street culture of European cafés and piazzas. Located behind Bayshore Mall, this mixed-use development will feature a 175-suite boutique hotel and luxury residences. As George Town's first ten-storey building, ONE GT will rise 144 feet, offering panoramic multi-aspect views. Residents will have access to the exclusive Sky Club on the 10th floor, complete with an infinity-edge pool, private cabanas, bar and grill, yoga and wellness spaces, and event areas. Additional amenities include a signature restaurant, grand café, private residents' pool, gym, valet service, covered parking, and storage units. With a robust rental program and strong potential for investment returns, ONE GT presents an offers a unique opportunity in the Cayman property market. Estimated completion is Q3/Q4 2025. Pricing will increase after completion.

Essential Information

Type	Status	MLS	Listing Type
Residential (For Sale)	New	419235	Condominium

Key Details

Bed	Bath	Block & Parcel	Year Built	Old Price
1	1	14BH,167UNIT706A	2025	0.00
Sqft				
717				

Additional Fields

Block	Parcel	Views	Foundation
14BH	167UNIT706A	Water View	Slab
Floor Level			
7			

Property Features

Pool	Den
Yes	Yes