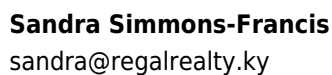
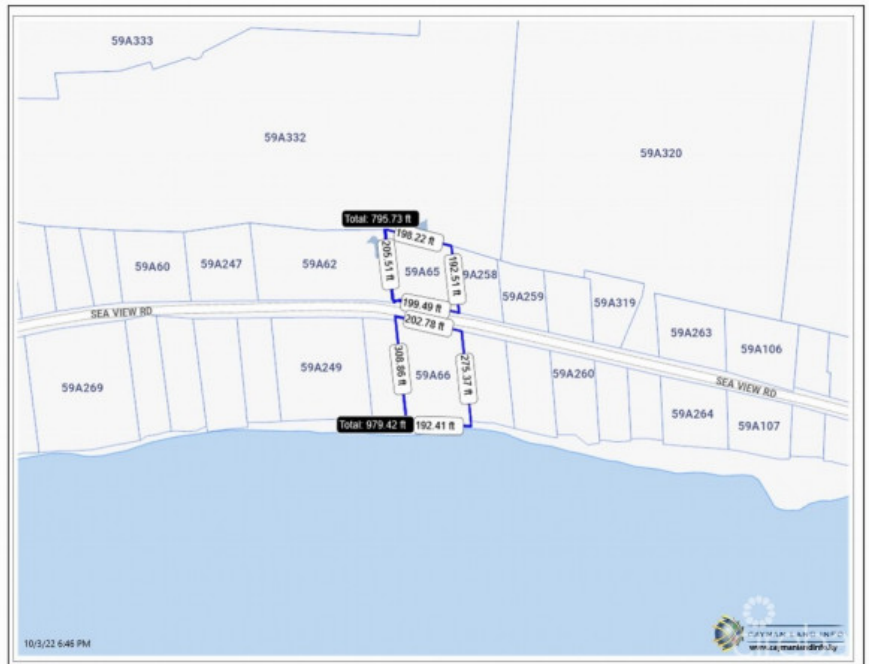




info@regalrealtycayman.com
www.regalrealtycayman

CI\$2,100,000



Lovely estate parcel on Frank Sound. 190 ft of beach front with 300 ft depth to the road and additional .80 acres across the road. This is the perfect parcel for your estate home allowing for extensive beach frontage, and great depth from the main road. This parcel has water & electric directly accessible from the main road.

Essential Information

Type	Status	MLS	Listing Type
Land (For Sale)	Current	415172	Beach resort residential

Key Details

Width 200	Depth 300	Block & Parcel 59A,65/66	Old Price 0.00
Acreage 2.0500			

Additional Fields

Block 59A	Parcel 65/66	Views Beach Front	Zoning Low Density residential
Sea Frontage 190	Road Frontage 200	Soil Sand	