



REGAL REALTY
CAYMAN

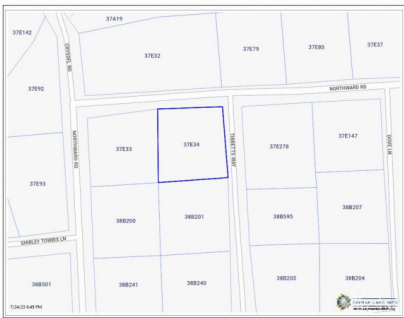
Queens Court, Seven Mile Beach, Grand Cayman, Cayman Islands
+1 (345) 916-7080
info@regalrealtycayman.com
www.regalrealtycayman

LAND AT THE CORNER OF NORTHWARD RD AND TIBBETTS WAY

Lower valley, Savannah & Bodden Town, Cayman Islands

MLS# 416338

CI\$180,000



Osbert Francis
bert@regalrealty.ky

Residential land in Northward at the corner of Northward Road and Tibbetts Way. The lot is .25 acres and has road frontage of approximately 100ft with a depth of 100ft. It's about 18 ft above sea level and ideal for building your home or investment property. The lot is cleared, level, and fully fenced with a scattering of fruit trees.

Essential Information

Type	Status	MLS	Listing Type
Land (For Sale)	Current	416338	Low density residential

Key Details

Width	Depth	Block & Parcel	Old Price
100	105	37E,34	0.00
Acreage			
0.2500			

Additional Fields

Block	Parcel	Views	Zoning
37E	34	Inland	Low Density residential
Road Frontage			
94			